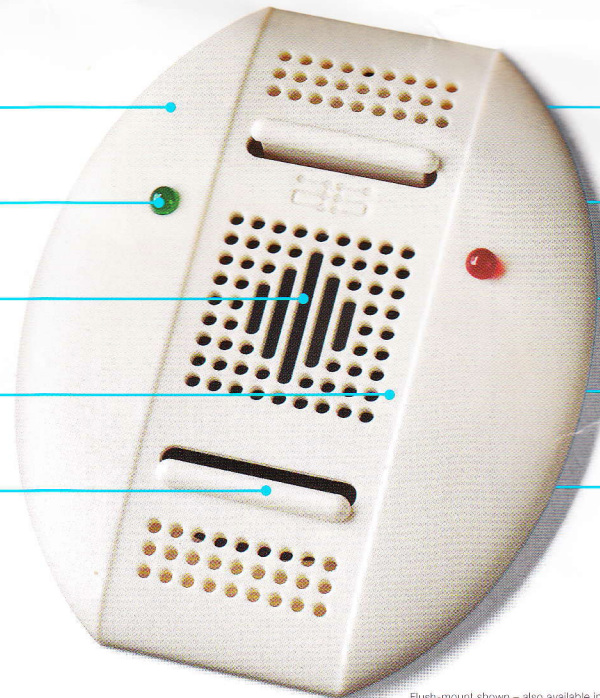


Constant power on –
checking for gas leaks
and ready to warn you
of explosive fumes

Very slim profile
allows installation
almost anywhere

Self Contained & Easy to Install in Your Camper or RV!



Flush-mount shown – also available in surface-mount

Easy installation – top
snaps onto surface-mount
or flush-mount back

Built in sensor detects
<25% of Lower
Explosive Level (LEL)

High output 85 dB
audio alarm

This self-contained detector is designed specifically for propane (liquified propane gas or LPG). It sniffs out leaks and warns you of explosive fumes.

Installation is simple. The top contains all the electronics and snaps onto the back – available in surface-mount or flush-mount styles. The completely concealed flush-mount back fits into a 3 $\frac{1}{8}$ " (79mm) hole, providing a very slim profile (0.45" high). The surface-mount leaves your installation surface virtually unmarked and still maintains a slim profile (1.2").

The green LED indicates the sensor is on and operating. If a leak is detected, the red LED and horn pulse, warning you to shut off the propane supply, ventilate the area and correct the problem.

You simply can't beat this detector for its quick installation, high reliability and affordable price – and it's backed by a hassle-free 2 year parts & labor guarantee.

GS/3 Propane Detector

Electro Systems has made boats and recreational vehicles safer for over 25 years. We have a complete line of propane detectors for you to choose from.

To find out more about our products, ask your local dealer, or contact us. We'll be glad to send you our current information.

Specifications

Size	4.32" High, 3.55" Wide, 1.23" Deep (exposed depth of flush mount: 0.45")
Power Req.	12VDC @ 86mA
Sensitivity	<25% of Lower Explosive Level
Alarm output	85 dB

Installation

Install the detector with the LEDs up for best visibility and, because propane is heavier than air, within 6" of the floor or the lowest area of the RV. Detach the top of the detector from the back by placing one thumb on each clip. Press each clip towards the center of the detector and lift the top away from the back. Put the top aside, follow instructions to secure the back.

Connecting to your power supply

Run power lines (#18 AWG minimum with 1/32" insulation) from the 12 volt battery to the installation location via a fuse or breaker of no more than 0.5 Amps.

Surface-mount back

Determine the center position for your detector and drill 1/2" D hole through your installation surface. Feed the power line through from behind. Screw down the detector back.

Flush-mount back

Determine the center position for your detector and use a 3/8" (79mm) hole saw to cut the opening or scribe a 3/8" (79mm) diameter circle and cut the opening with a saber saw. Feed the power line through from behind. Screw the detector back onto your installation surface.

Connecting electronics

Connect the power lines to the leads from the detector, (red to positive, black to negative)*. Wires may be soldered or splice crimped and connections must be insulated. Snap the top onto the back. You're done!

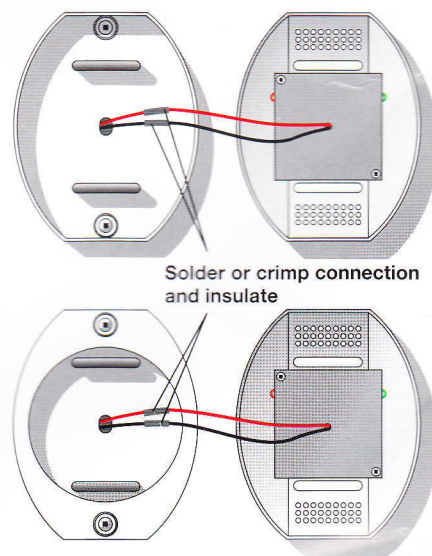
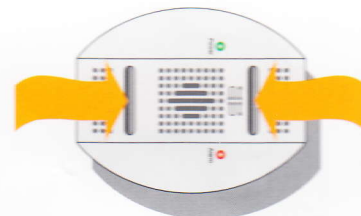
*If you accidentally reverse the polarity, the detector will not be damaged, but will not function until you reconnect the wires correctly.

Operation

When you connect power to your new detector it goes through a start-up cycle. The green LED (marked "Power") comes on. The red LED (marked "Alarm") and horn will pulse for approximately 5 seconds until the sensor is warmed up. If no fumes are detected, the red LED and horn stop and the green LED remains on, indicating the detector is active. The detector can be tested by injecting gas (no flame) from a butane lighter for 5 seconds into the lower grill. Perform this test monthly to ensure proper operation of the detector.

If fumes are present at start-up, the horn and red LED will *continue* to pulse – from 60 pulses/minute at concentrations lower than 25% of the lower explosive level, to 80 pulses/minute at higher concentrations. If fumes are detected at any time after start-up the horn and red LED will *start* to pulse. If this occurs, immediately shut off the propane supply and ventilate the area. Avoid using any source of ignition, including electric switches, electric motors, pilot lights or other open flames. When the fumes have dissipated, the horn will stop and the red LED will turn off, indicating a safe atmosphere. Correct the leak before resuming operation of the propane system. A continuous tone indicates a short in the electronics and a single pulse every 10 seconds indicates a faulty sensor. If either of these signals occur, return the detector to your dealer for repair or warranty replacement.

The presence of other organic vapors, such as paint fumes, solvents or hair spray can trigger a false alarm. Ventilate the area and this should stop the alarm. Your detector needs unrestricted air flow through the grill for reliable operation. Keep free of any obstructions and vacuum monthly.



ELECTRO SYSTEMS

Electro Systems Inc.

USA: 3873 Airport Way
Bellingham, WA 98227-9754
T: 1.800.668.2254
F: 1.800.661.4977

Canada: *8-415 Dunedin St.
Victoria, BC V8T 5G8
T: 250.385.0911
toll free: 1.800.668.2254
F: 250.385.0733
toll free: 1.800.661.4977

E: info@es-web.com
www.es-web.com

Information contained in this brochure is subject to change without notice.
This brochure is for information purposes only. Printed and manufactured in Canada.



LISTED
Recreational Vehicle
Propane Gas Detector
54YL